

THE CLARKSVILLE	
STANDARD FEATURES	
FLOOR PLAN	1218 SQ. FT.
BASEMENT PLAN	494 SQ. FT.
TOTAL LIVING AREA	1712 SQ. FT.
GARAGE / STORAGE	472 SQ. FT.
COVERED PORCH	30 SQ. FT.
ENTRY STOOP	N/A
OPTIONAL FEATURES	
OPT FINISHED BASEMENT	494 SQ. FT.
OPT BAY WINDOW	N/A
OPTIONAL WOOD DECK	N/A
OUTSIDE DIMENSIONS	
OVERALL WIDTH	44'-0"
OVERALL DEPTH	28'-0"

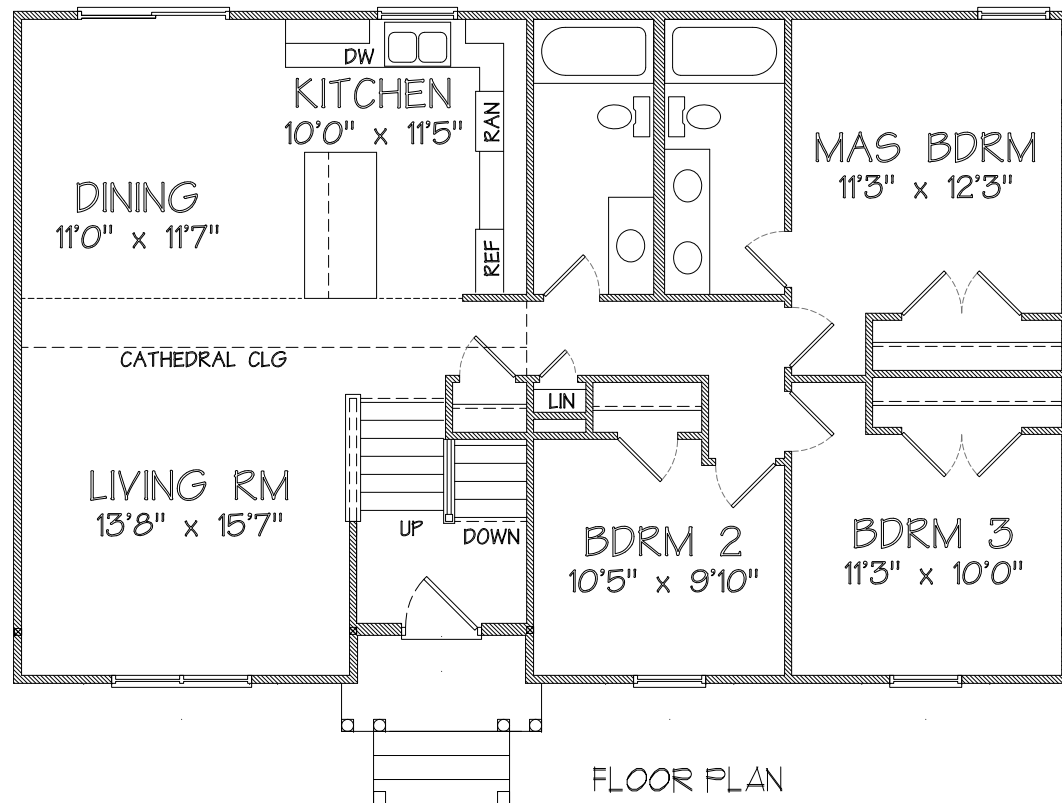
TABLE OF CONTENTS	
PAGE NO.	TITLE
1	COVER PAGE
2	FLOOR PLANS
3	ELEVATIONS
4	CROSS SECTIONS
5	WALL SECTIONS
6	FOUNDATION WALL SECTIONS
7	GENERAL NOTES
F-1	FLOOR JOIST LAYOUT
S-1	FLOOR PLAN BRACED WALL
S-2	BASEMENT PLAN BRACED WALL

CODE COMPLIANCE
INTERNATIONAL RESIDENTIAL CODE 2009
VIRGINIA USBC 2009 EDITION

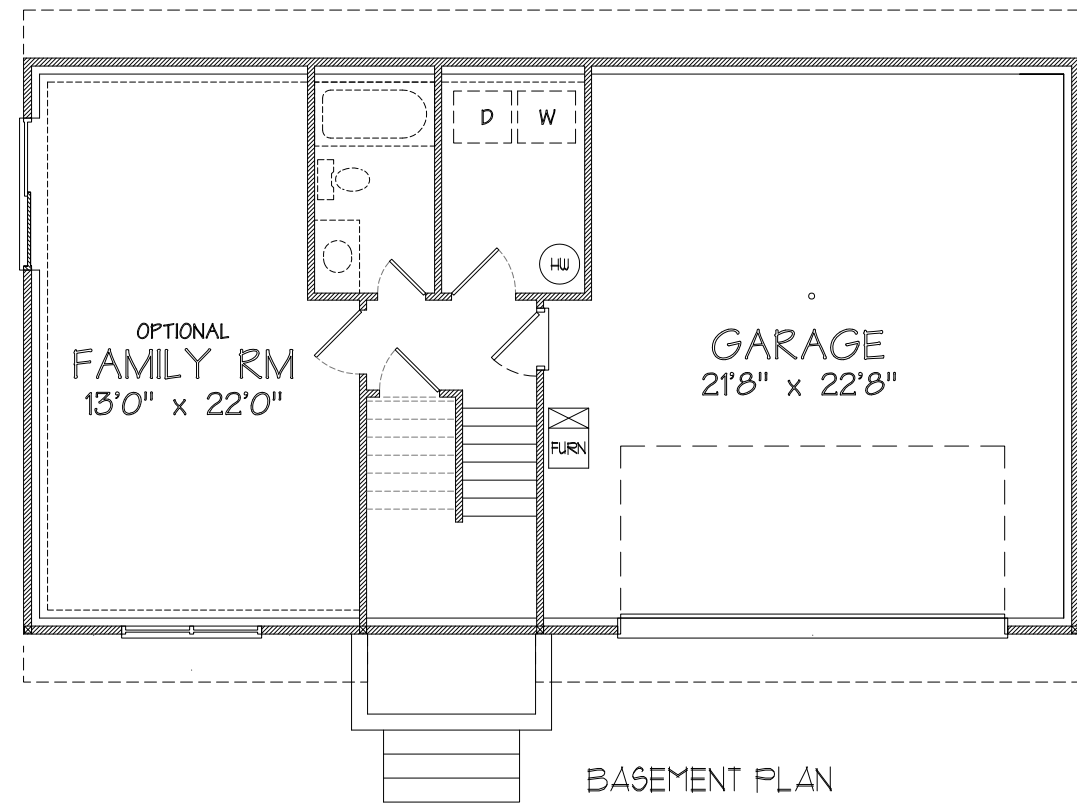


WESTBROOKE HOMES
CLARKSVILLE, LOT 2A BLATON

FRONT ELEVATION



FLOOR PLAN



BASEMENT PLAN