



WESTBROOKE
HOMES

the Shenandoah



Elevation 1



Elevation 2



Elevation 3

1804 sq ft

3-4 Bedrooms

2 Baths

2 Car Garage

*Plans and features are subject to change
without notice. Renderings are for
marketing purposes only.*

www.westbrooke-homes.com



Shenandoah Elevation A - First Floor



Selected Options:

- Addl. Windows in Bedroom #2 & Bath
- Fireplace
- 2' Rear Ext.
- 6' Family Rm. Ext.
- Bathroom Door
- Decorative Columns
- Kitchen Island
- Tray Ceiling
- Bedroom #3
- Sunroom
- Sunroom with Patio Door
- Sunroom with Skylights
- Side-Load Garage

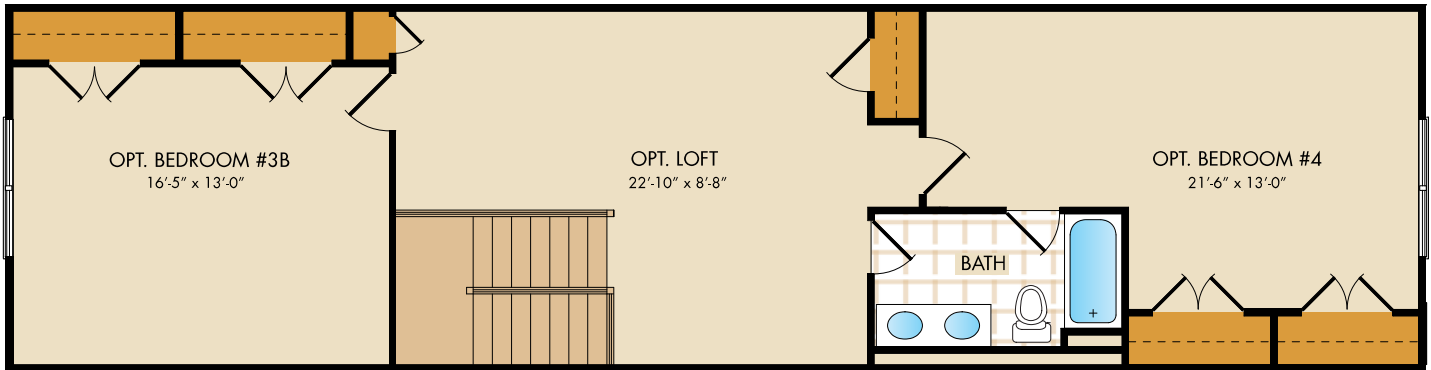
Canterleigh
(301) 710-0174

Copyright © 2008 Westbrooke Homes. Floorplans are for illustrative purposes only. All dimensions are approximate. Some available options are not shown. Please see a Westbrooke Homes Community Sales Manager for details.



WESTBROOKE
HOMES

Shenandoah Elevation A - Second Floor



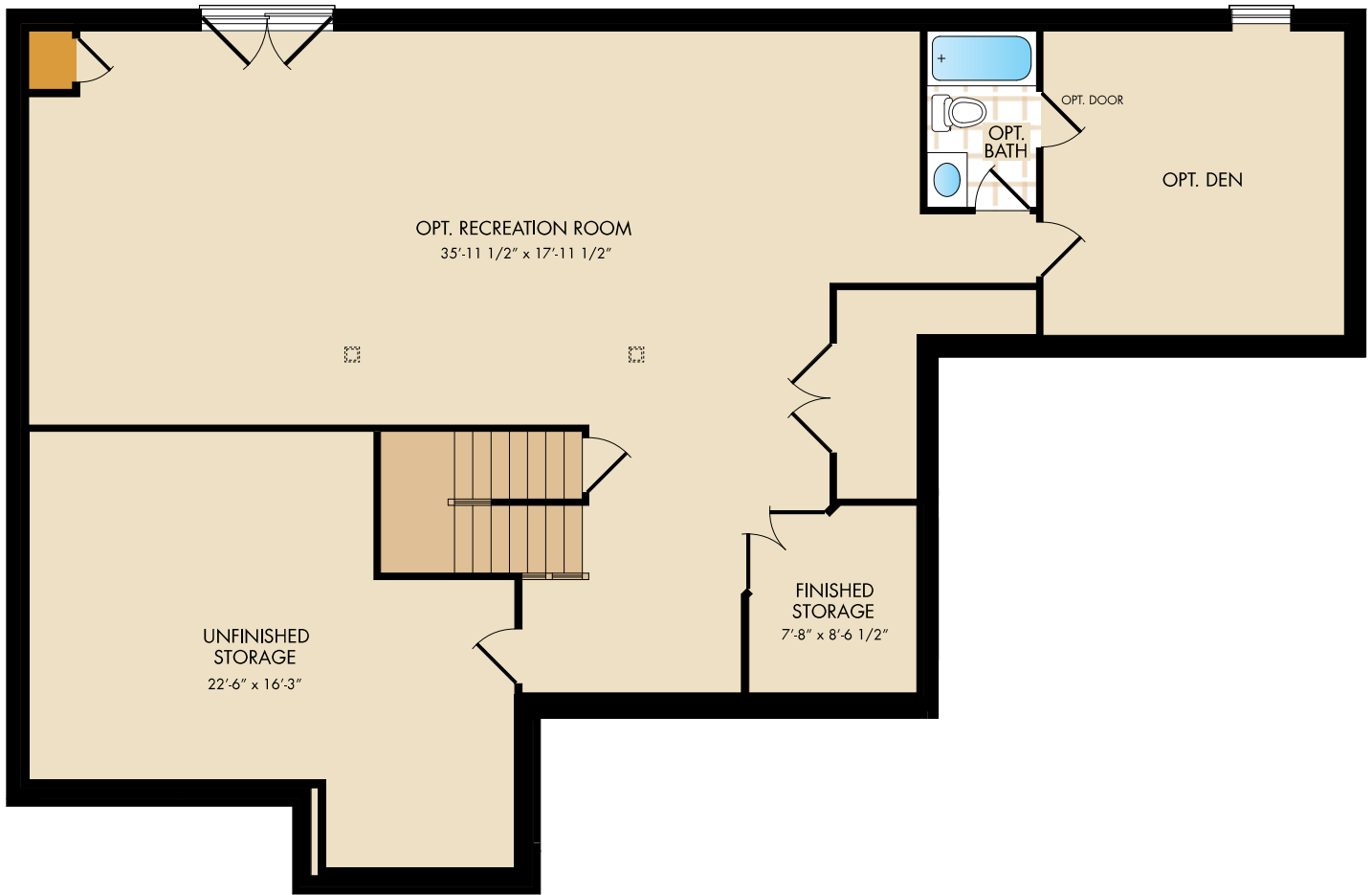
Selected Options:
Optional Second Floor

Canterleigh
(301) 710-0174

Copyright © 2008 Westbrooke Homes. Floorplans are for illustrative purposes only. All dimensions are approximate. Some available options are not shown. Please see a Westbrooke Homes Community Sales Manager for details.



Shenandoah Elevation A - Lower Level



Selected Options:
Finished Lower Level
Finished Lower Level Optional Door
Finished Lower Level Walkout

Canterleigh
(301) 710-0174

Copyright © 2008 Westbrooke Homes. Floorplans are for illustrative purposes only. All dimensions are approximate. Some available options are not shown. Please see a Westbrooke Homes Community Sales Manager for details.

